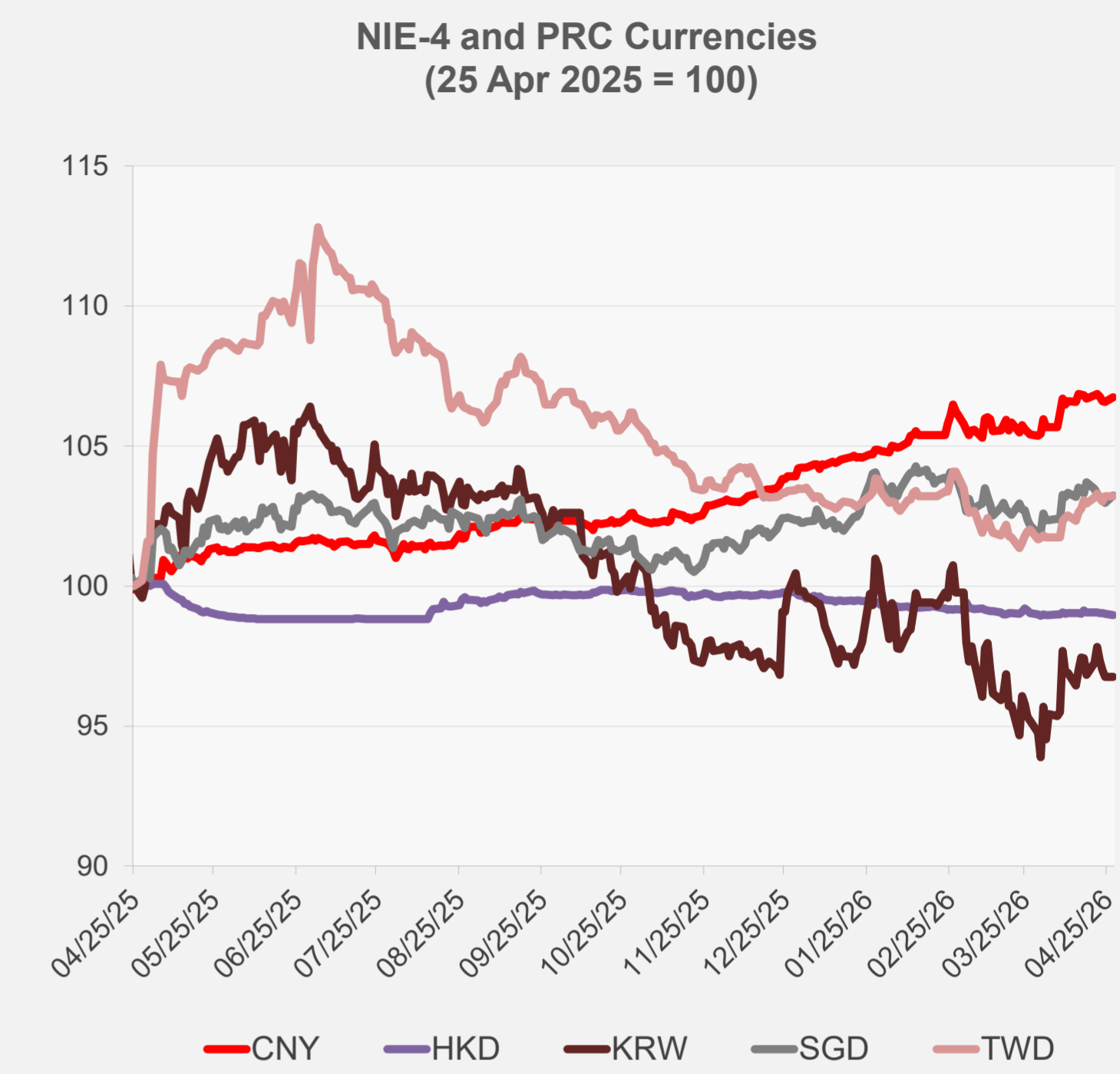
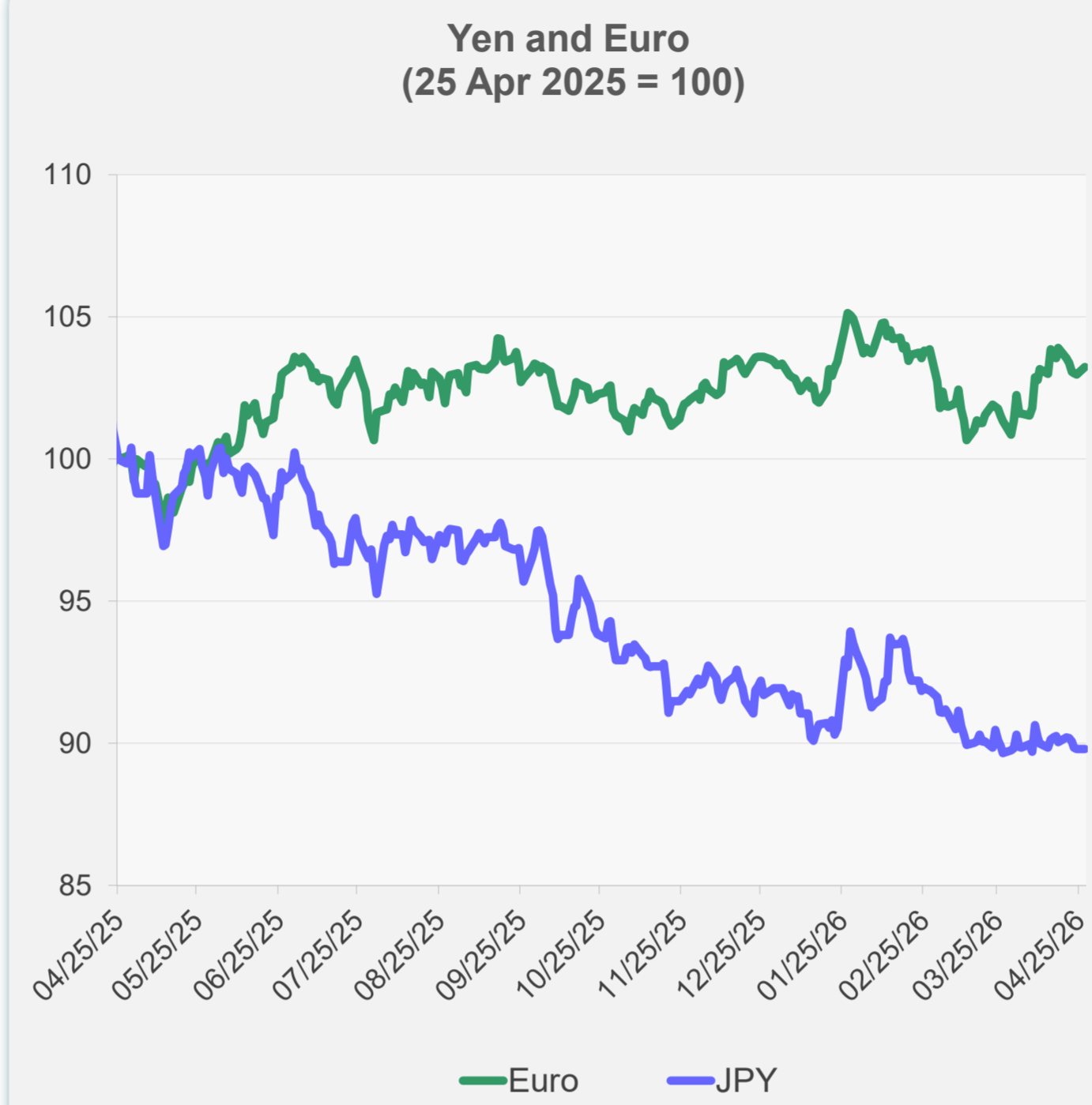
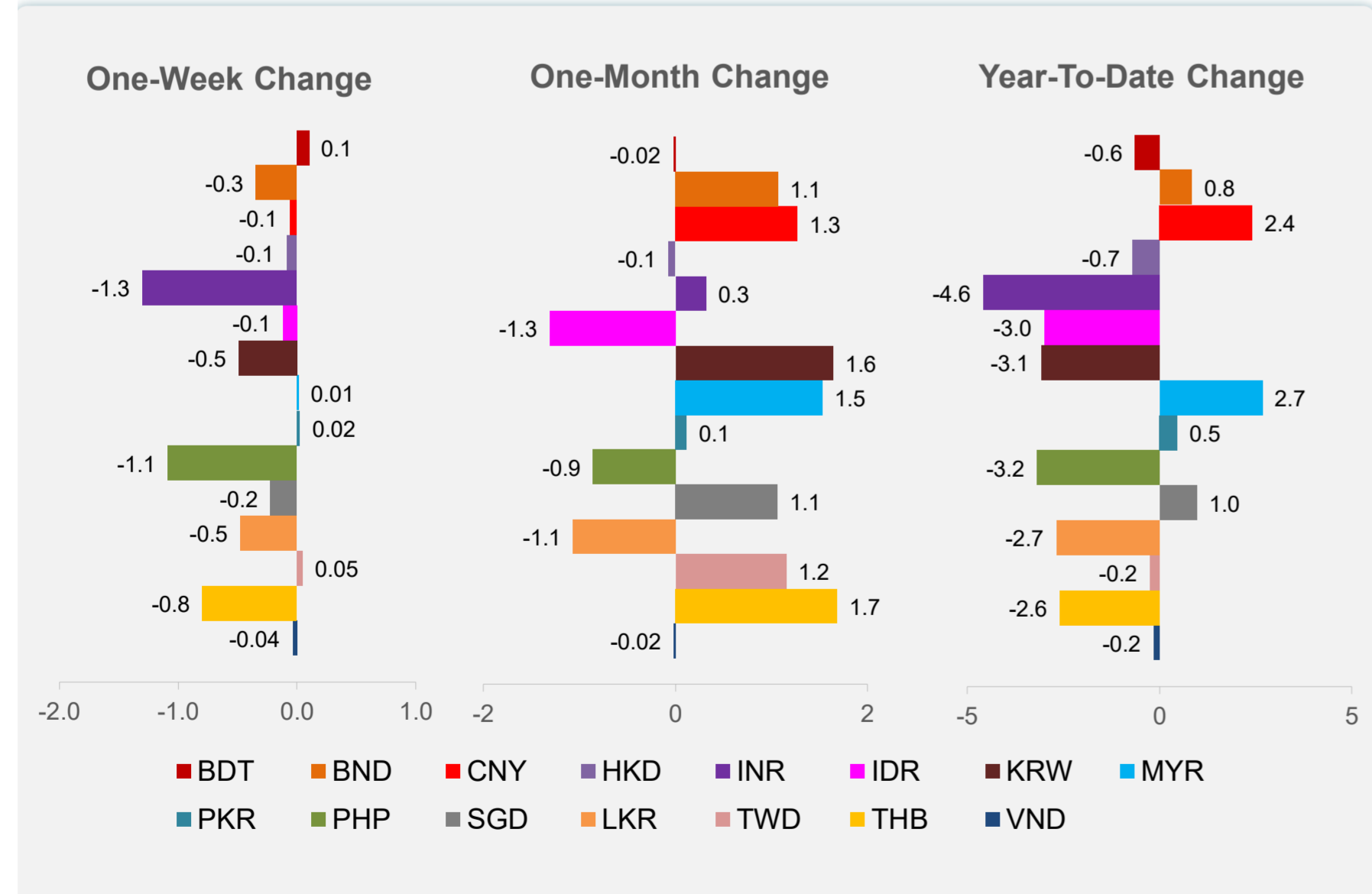
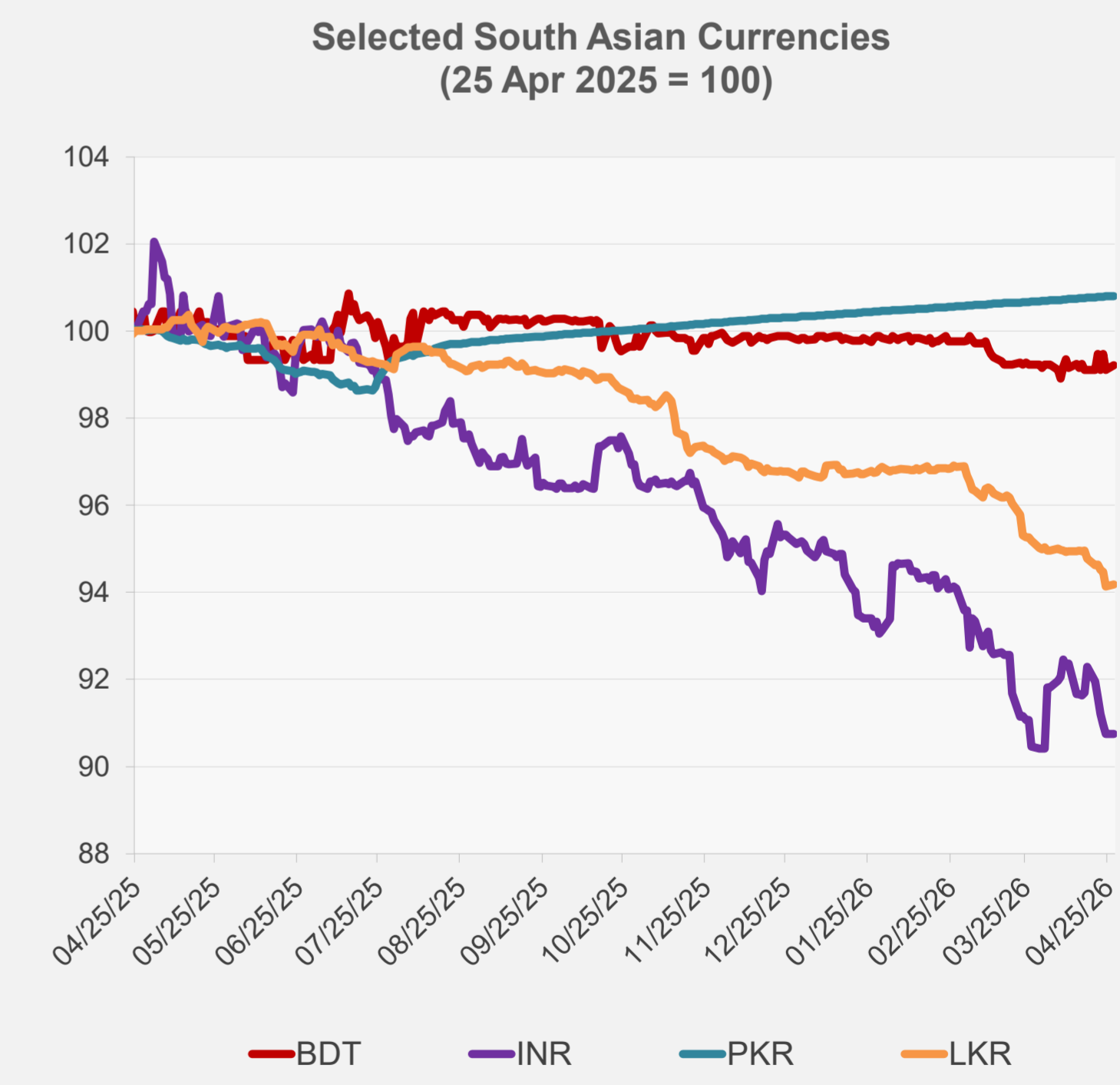
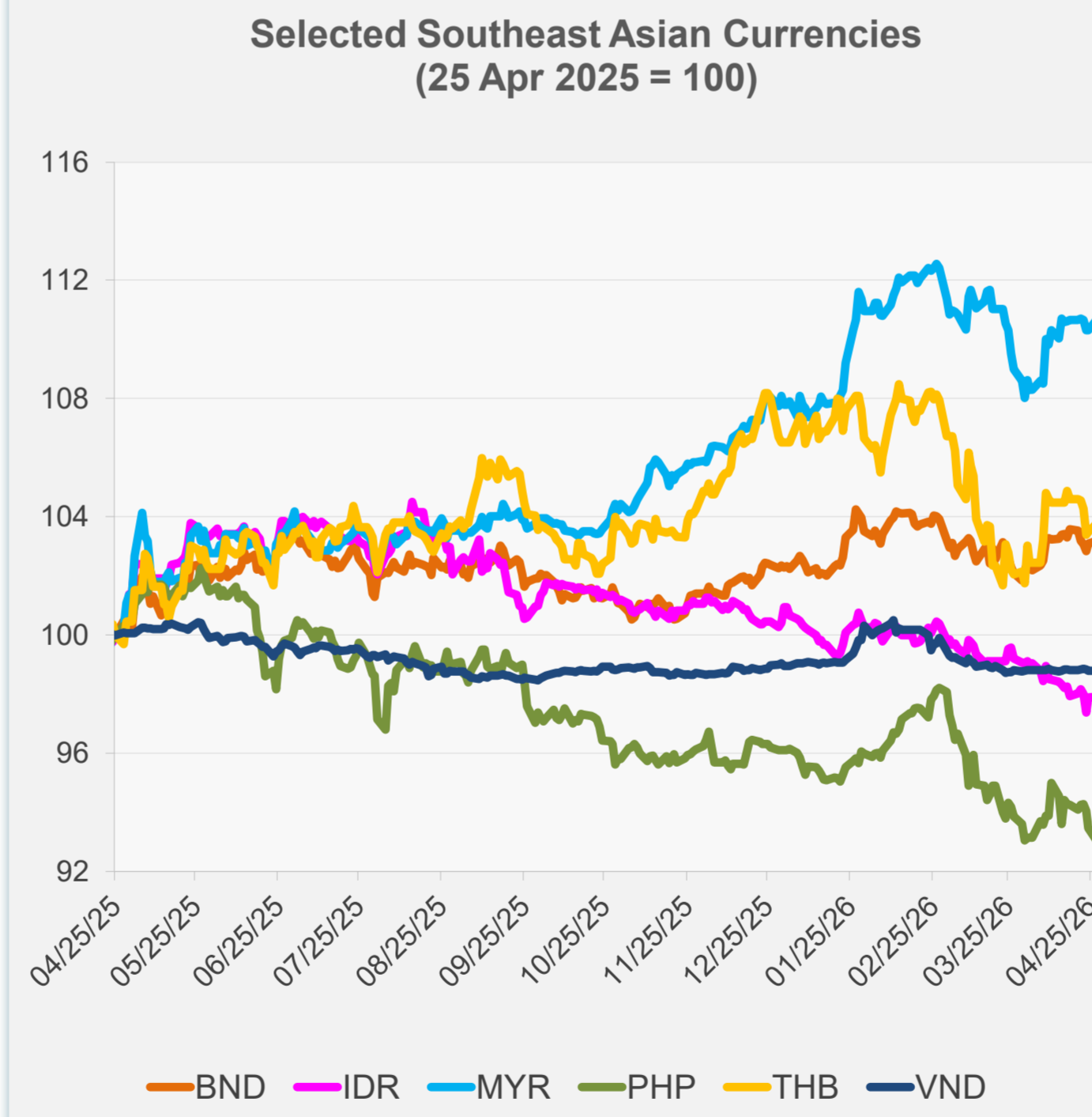


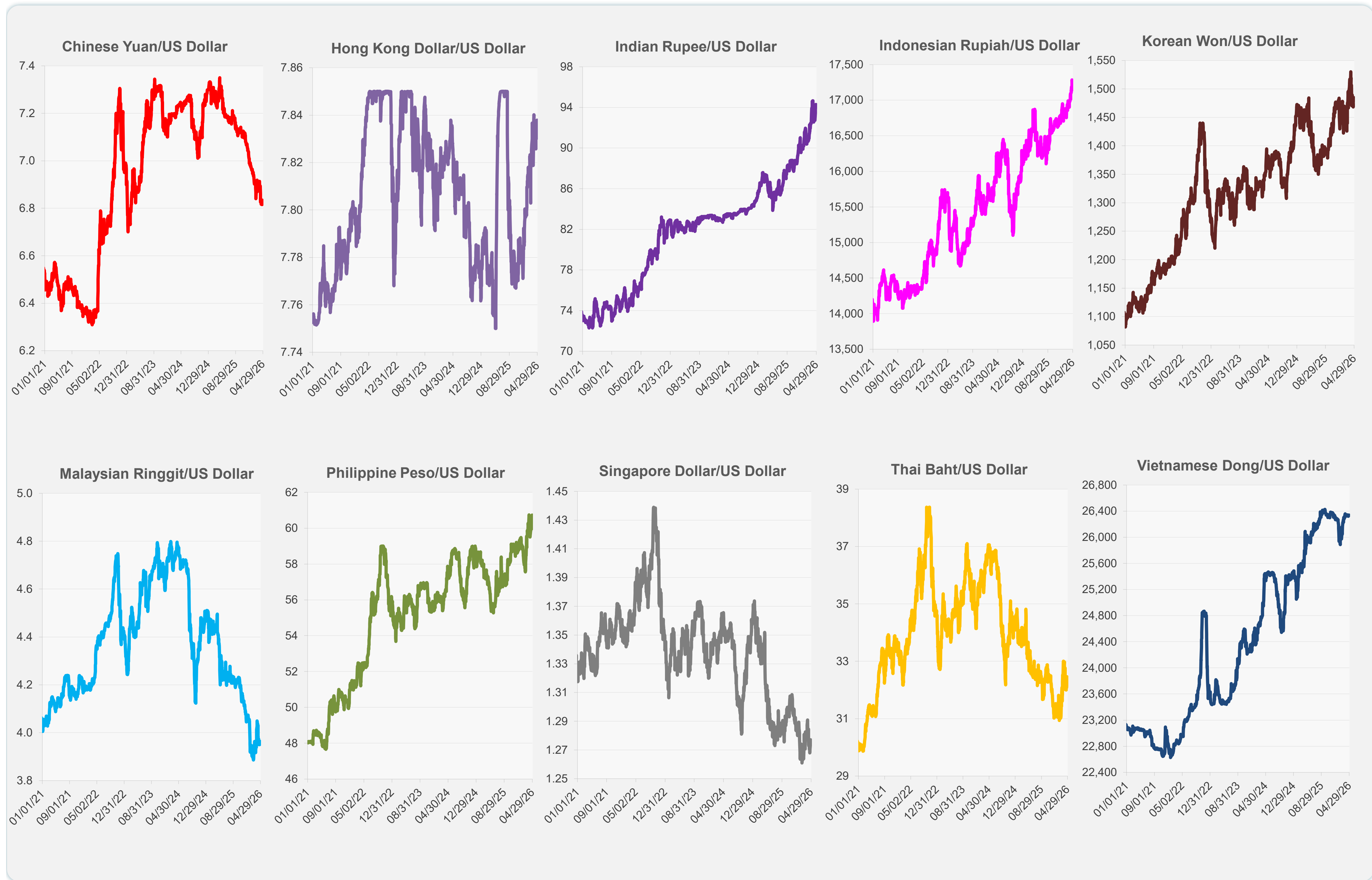
	Latest Closing	% change from Previous Day	% change from 01-Jan-26
Euro	0.85	0.26	-0.07
Japanese yen (JPY)	159.68	0.00	-2.32
Bangladeshi taka (BDT)	123.03	0.10	-0.63
Brunei dollar (BND)	1.27	0.08	0.84
Chinese yuan (CNY)	6.82	0.16	2.41
Hong Kong dollar (HKD)	7.84	-0.05	-0.69
Indian rupee (INR)	94.30	0.00	-4.58
Indonesian rupiah (IDR)	17,190.00	0.01	-3.00
Korean won (KRW)	1,484.50	0.00	-3.07
Malaysian ringgit (MYR)	3.95	0.32	2.67
Pakistan rupee (PKR)	278.82	0.00	0.46
Philippine peso (PHP)	60.74	-0.44	-3.18
Singapore dollar (SGD)	1.27	0.26	0.97
Sri Lanka rupee (LKR)	318.13	0.04	-2.68
Taipei,China NT dollar (TWD)	31.52	0.00	-0.25
Thai baht (THB)	32.34	0.27	-2.59
Vietnamese dong (VND)	26,341.00	0.00	-0.16



NIE = Newly Industrialized Economies



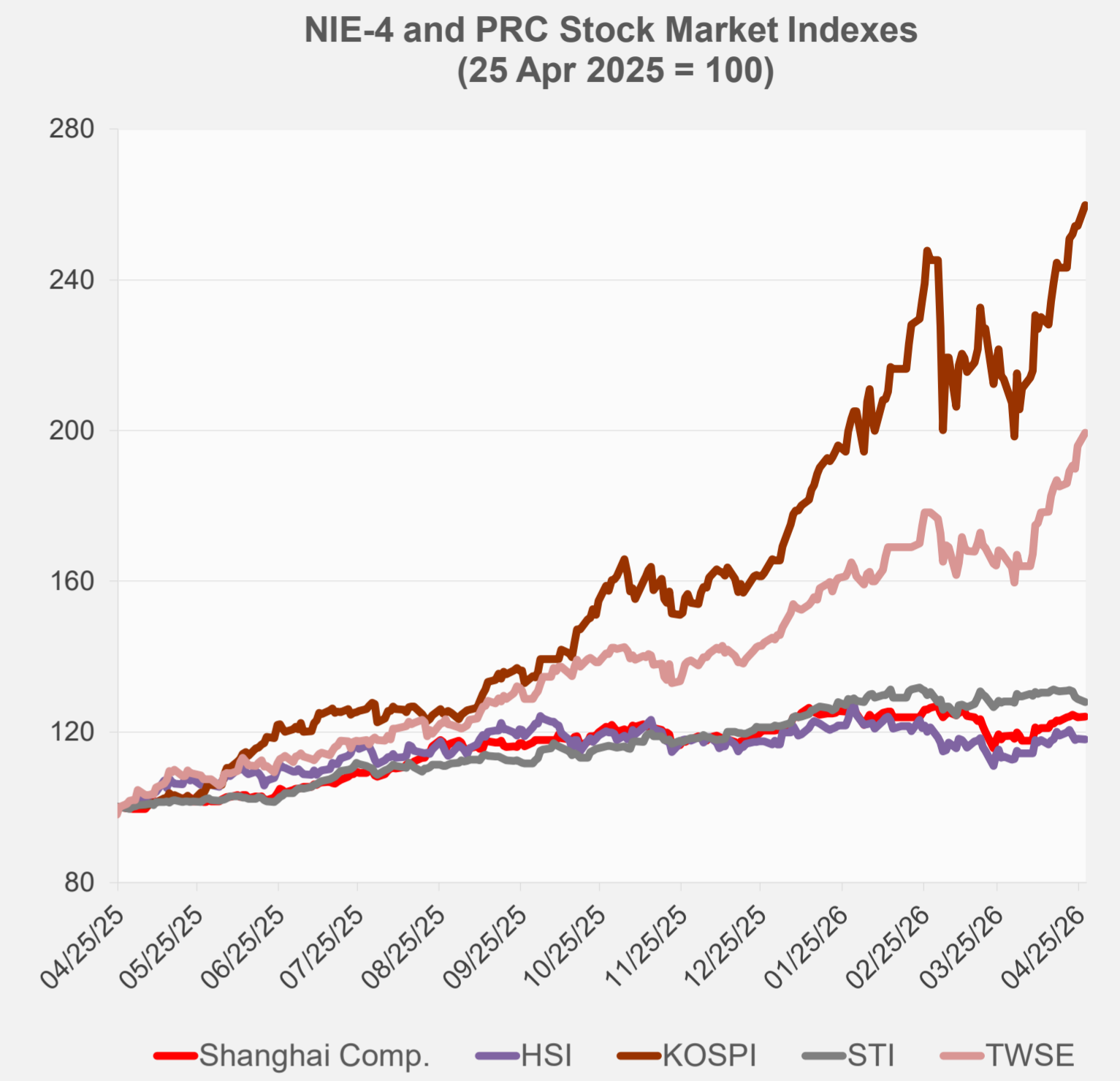
Note: Negative/Decreasing values indicate depreciation of local currency, and positive/increasing values indicate appreciation.  
Source: ADB calculations using data from Bloomberg and Haver Analytics.



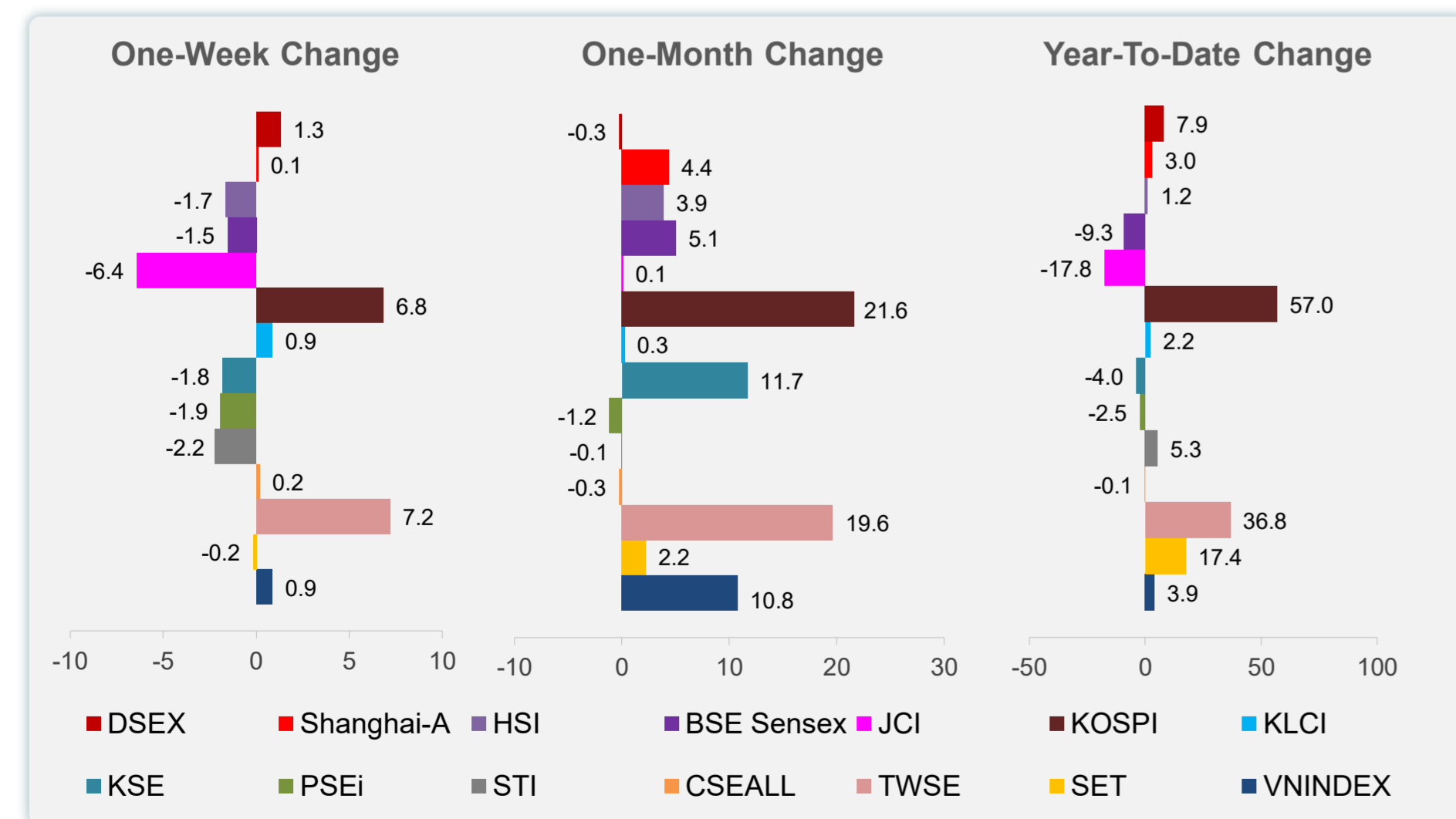
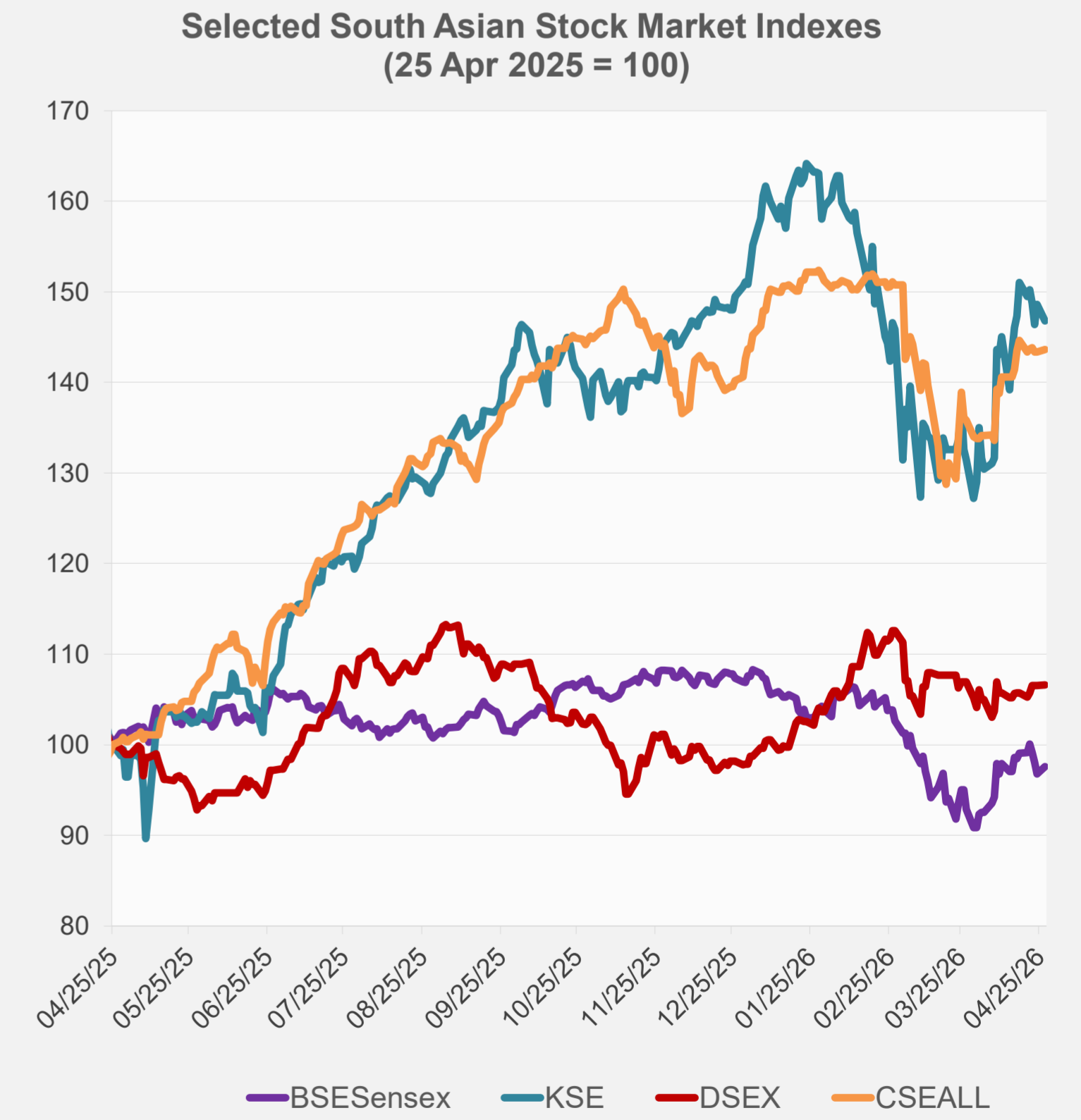
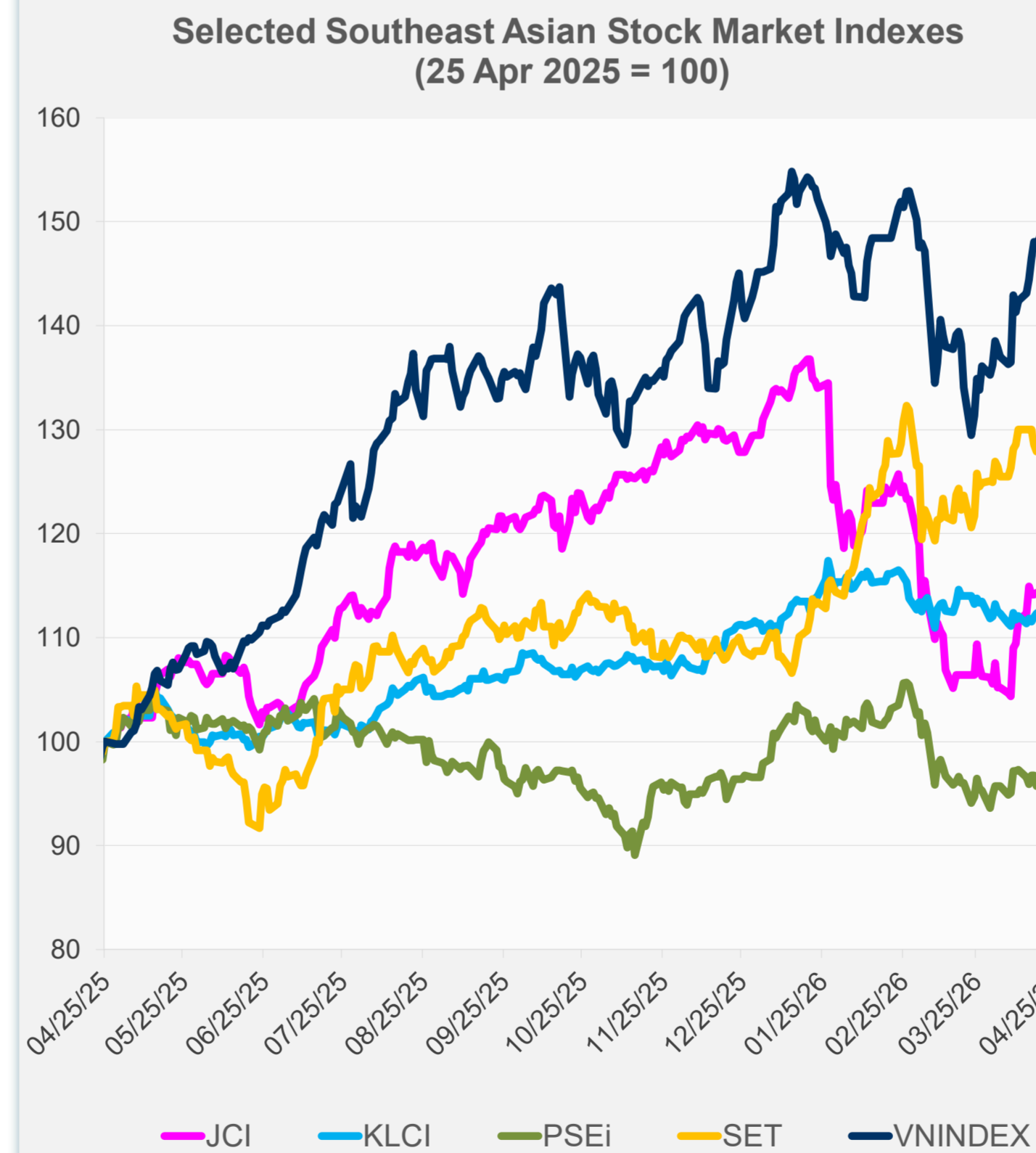
Source: Haver Analytics.

Daily Market Watch  
**STOCK INDEXES**

	Latest Closing	% change from Previous Day	% change from 01-Jan-26
US Dow Jones Ind Avg	49,167.79	-0.13	2.30
US NASDAQ	24,887.10	0.20	7.08
US S&P 500	7,173.91	0.12	4.80
UK FTSE 100	14,594.01	1.28	29.59
EURO STOXX 50	5,860.32	-0.39	1.19
Japan NIKKEI 225	60,537.36	1.38	20.26
Bangladesh DSEX	5,300.57	0.04	7.94
PRC Shanghai Comp.	4,086.34	0.16	2.96
Hong Kong, China HSI	25,925.65	-0.20	1.15
India BSE Sensex	77,303.63	0.83	-9.26
Indonesia JCI	7,106.52	-0.32	-17.81
Korea, Rep. of KOSPI	6,615.03	2.15	56.97
Malaysia KLCI	1,717.27	-0.18	2.21
Pakistan KSE 100	169,474.80	-1.25	-3.97
Philippines PSEi	5,901.15	-0.71	-2.51
Singapore STI	4,892.73	-0.61	5.31
Sri Lanka CSEALL	22,612.31	0.20	-0.05
Taipei, China TWSE	39,616.63	1.76	36.78
Thailand SET	1,479.13	1.58	17.42
Viet Nam VNINDEX	1,853.29	0.00	3.86



NIE = Newly Industrialized Economies



Sources: ADB calculations using data from Bloomberg and CEIC Data Company.

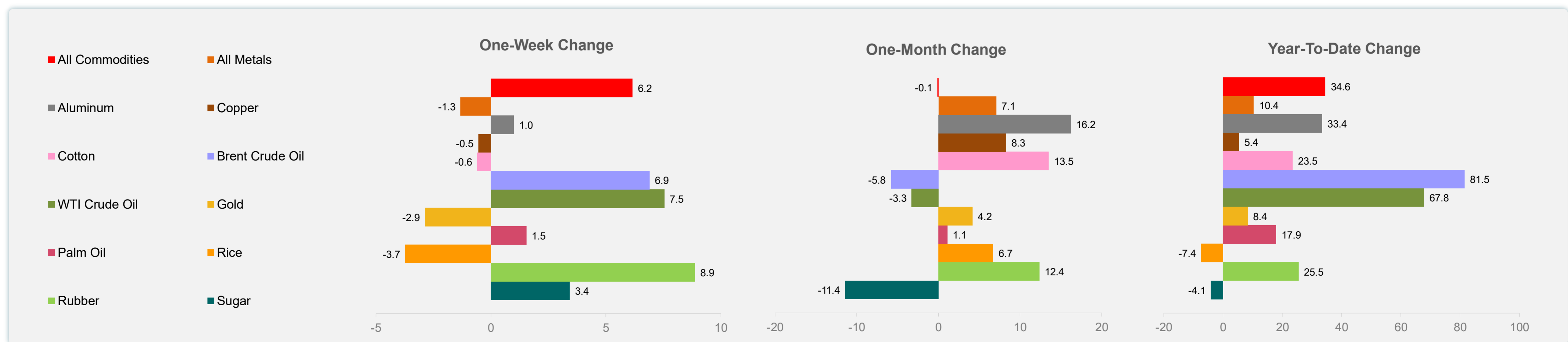
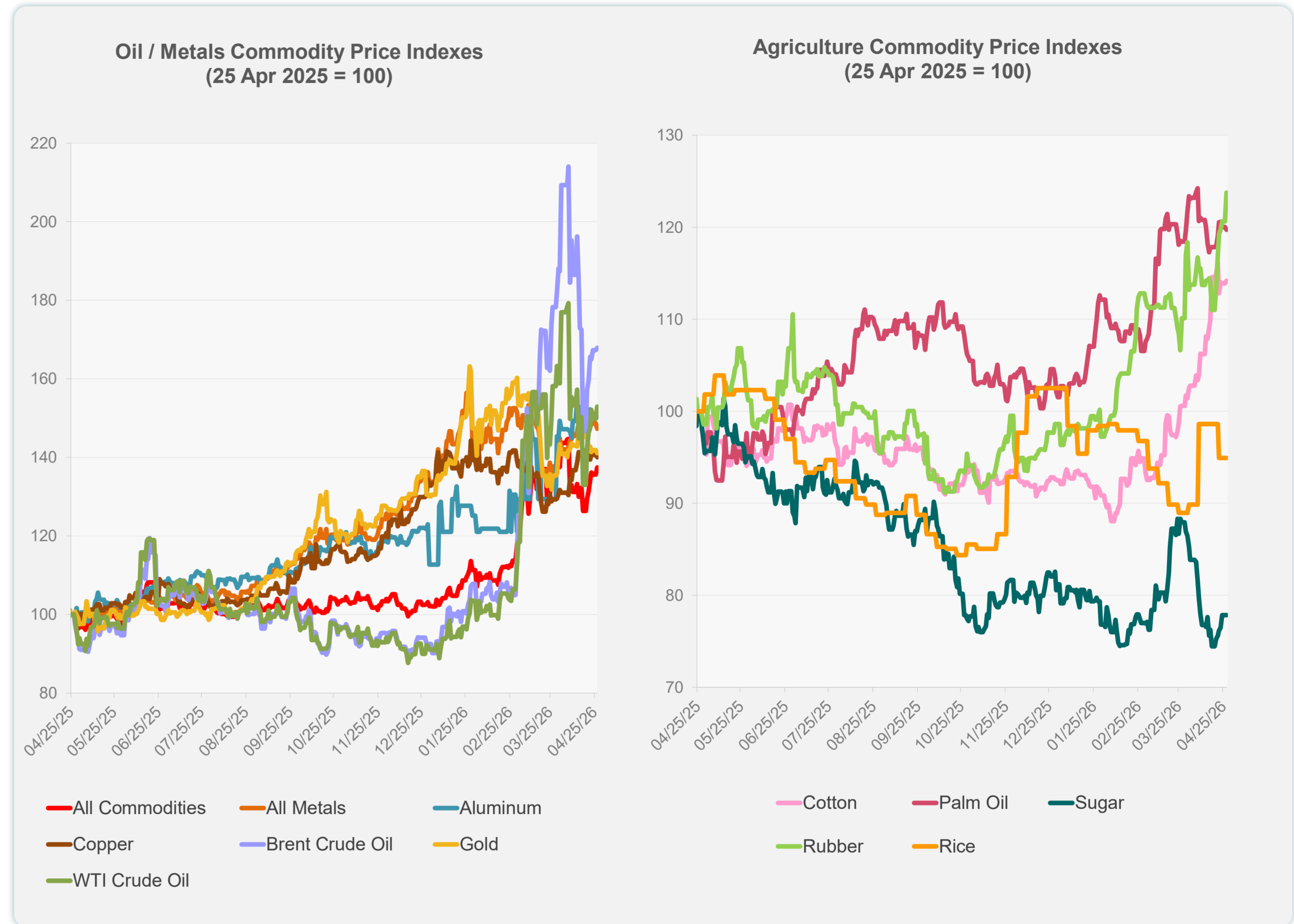


Sources: ADB calculations using data from Bloomberg and CEIC Data Company.

Daily Market Watch  
**COMMODITY PRICES**

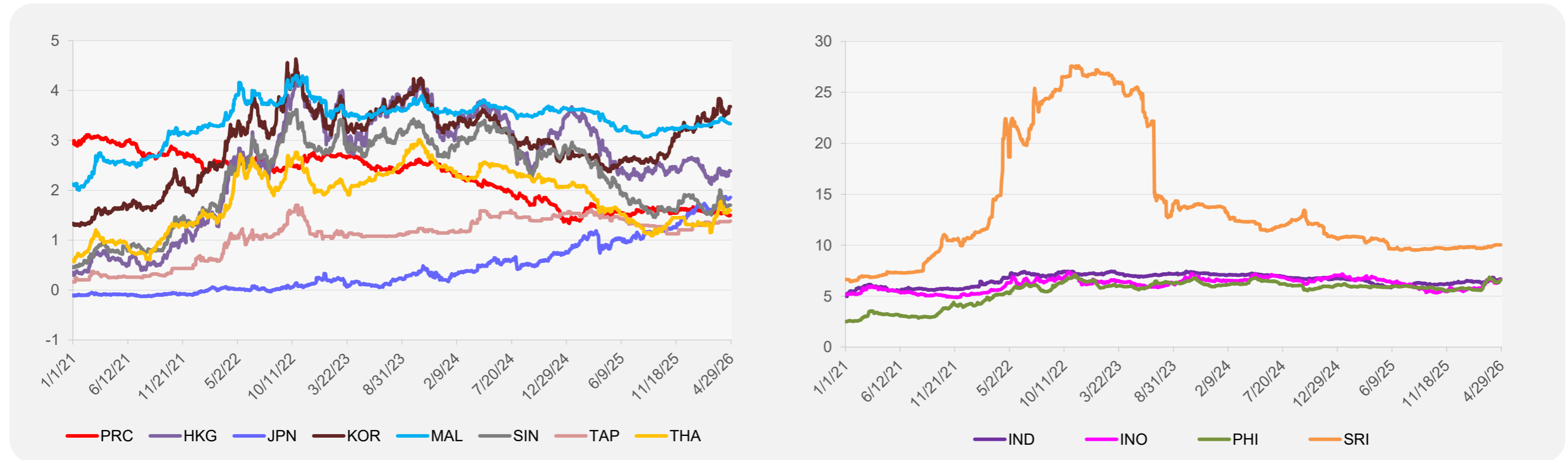
	Unit	Latest Closing	% change from Previous Day	% change from 01-Jan-26
S&P All Commodities	US\$	738.19	1.31	34.58
S&P All Metals	US\$	489.81	-0.93	10.38
Aluminum	US\$/metric ton	3,602.50	-0.51	33.43
Copper	US\$/metric ton	13,128.00	-0.47	5.42
Cotton	US cents/lb	76.58	0.29	23.48
Brent Crude Oil	US\$/barrel	113.34	0.37	81.50
WTI Crude Oil	US\$/barrel	96.37	2.09	67.83
Gold	US\$/troy oz	4,682.08	-0.58	8.40
Palm Oil	US\$/metric tonne	1,142.35	-0.25	17.93
Rice <sup>1</sup>	US\$/metric ton	413.00	0.00	-7.40
Rubber <sup>2</sup>	US\$/kg	269.80	2.59	25.49
Sugar	US cents/lb	14.18	0.00	-4.12

<sup>1</sup> Latest closing price from 12 April 2026.  
<sup>2</sup> Singapore Exchange, Ribbed Smoked Sheet Rubber.

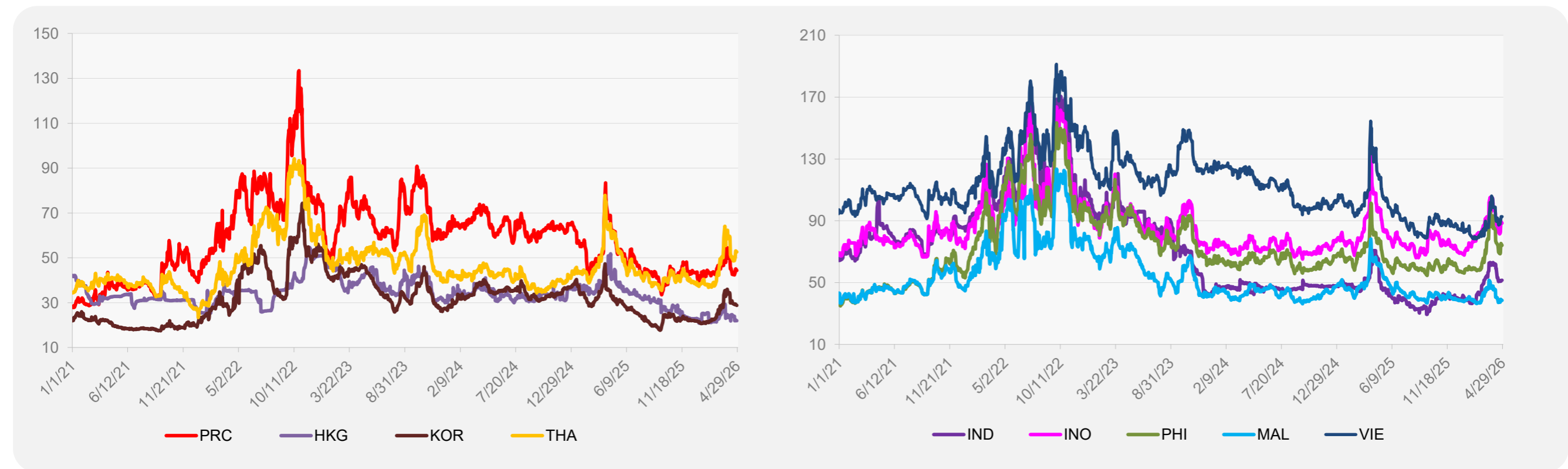


Source: ADB calculations using data from Bloomberg.

### 5-YEAR LOCAL CURRENCY GOVERNMENT BOND YIELDS (%)



### 5-YEAR CREDIT DEFAULT SWAP<sup>1</sup>



<sup>1</sup> In USD and based on sovereign bonds.  
Source: ADB calculations using data from Bloomberg.